

**Healthcare Emergency Preparedness Council**  
 May 5, 2008  
 Memorial Medical Center  
 1700 McHenry Ave, Modesto (McHenry Village)

In Attendance – X		Absent = O	
X	Scott Penner, Chair		Jeff Wilson
X	Terry Nelson, Vice Chair	X	Renee Cartier, Voting Member
X	Marianne Shaw, Secretary		John Walker, MD
X	Mike Corbin	X	Randy Fike
X	Richard McGinthy	X	Rosie Lopez
	Rashmi Birla		Janwyr Funamura
X	Kay Gordon, Voting Member		Scott Seamons
	Dave Plantier		Bob Castillo
	Judy Mahan	X	Ryan Zollicoffer
	Karen Hall		Michael Rossini, MD
X	Renee Pimentel, Voting Member	X	Tammie Waddle, Voting Member
	Lynn Leatherman	X	Sharon Perry
X	Daniel Cipponeri, Voting Member		Cindy Young
X	Don Bailey		David Sasser, MD
	Troy Lute	X	Alicia Hinshaw, voting member
X	Leta Love	X	Dan Sharver

1. Welcome and Introductions

Scott Penner called the meeting to order at 1302 and welcomed everyone. Self introductions were conducted.

Tom Brennan retiring – card passed around

**Clarification of Members: voting – one vote per authorized entity. Must attend ¼ of previous year meetings.**

2. Approval of Minutes

**Motion: (Alicia Hinshaw/Rosie Lopez) to approve the minutes as with the addition of adding Don Bailey, Rosie Lopez and Richard Murdock to the attendees.**

MID presentation recap – Dan concerned regarding exemption from MID for LTC. Scott suggested that Dan contact legislation. Grids cannot exempt all LTC's, too many of them.

3. EOC Presentation – Mike Wilkinson

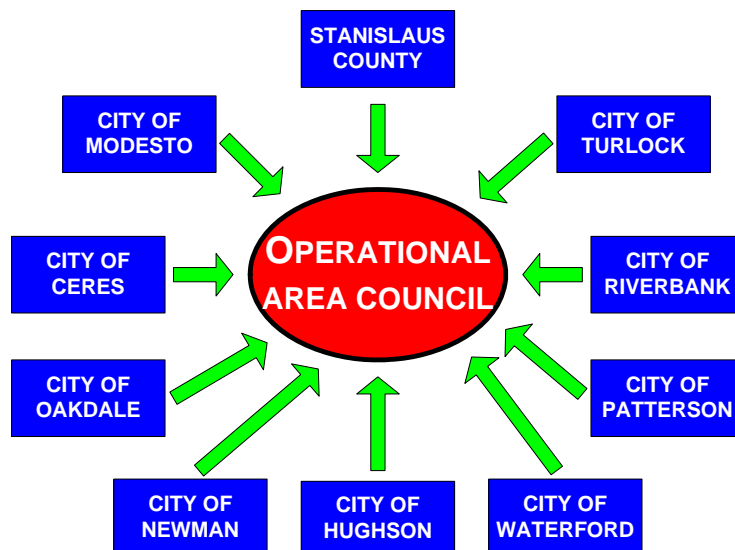
Stan County Emergency Mgrs decision process. Ca Emergency Services Act 8610 – may create disaster councils, shall develop plans for meeting any condition constituting a local emergency. 1946 certified the Stan County Disaster Council. Meeting in 1947, then no more. All cities in SC adopted Disaster Councils also. Found out that all 9 cities adopted councils in 1940's but not

active. Not aware that the ordinance was active. 1991 Oakland Hills Fire – Petris Bill – Must use SEMS – operational areas. Must have Operational Area Council. Enhance our ability to play together in county. All 9 cities are signature members. 1998 agreement to but together.

Why now??? 35 different groups that are doing active good community work within county. Writing plans individually. Need to coordinate, collaborate and communicate together effective Emergency Planning Efforts for Operation Area. Post Katrina EM Reform Act of 2006. Those of you that do not meet requirements need to do so. Addresses Counties. Cities, schools, hospital, faith-based, private. If you aren't compliant and have disaster, will not get Stafford money. Risk heavy if we don't comply, mitigation & recovery. CERT team mandates: background checks, ID cards. Special populations: ADA requirements. Do we have Rx, appropriate beds in shelters, choose shelter, Calif Animal Response Emergency System (CARES); people will not leave without animals. Latino Emergency Communications group; doing excellent work.

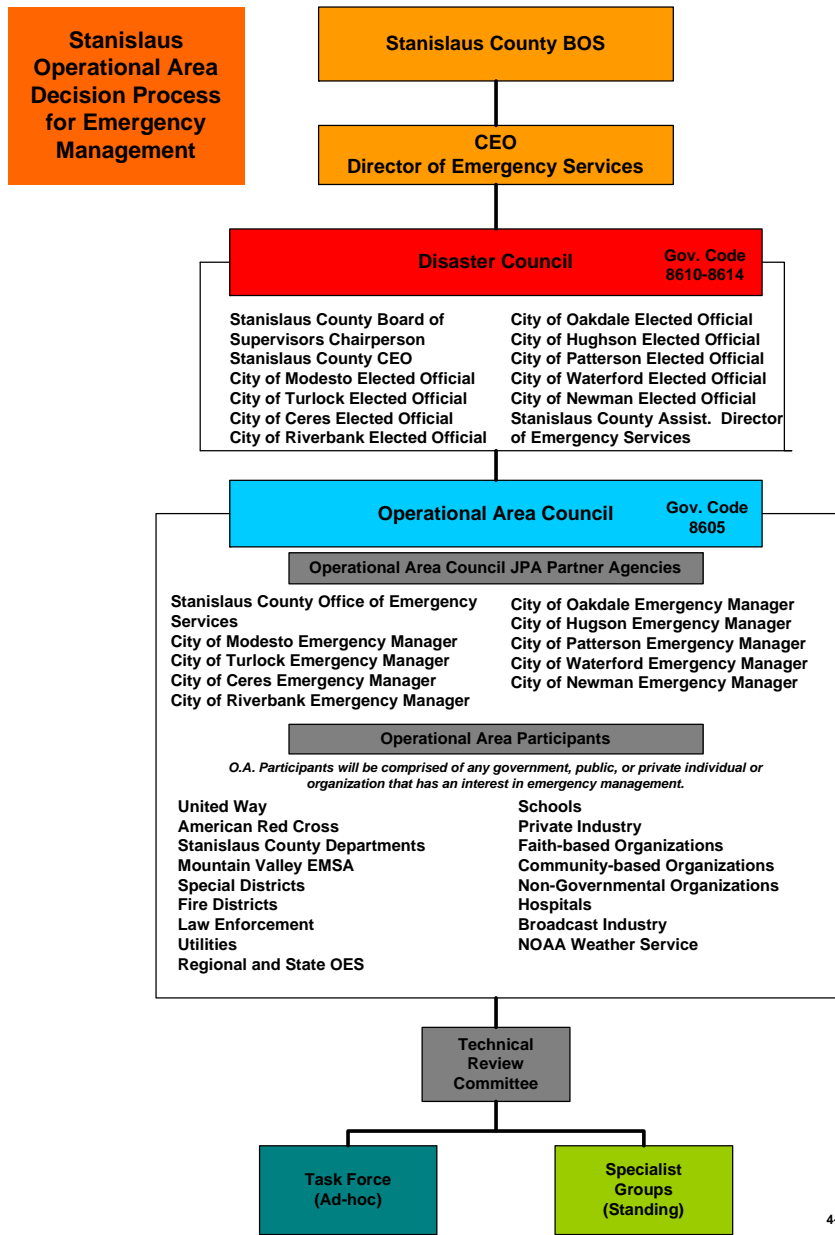
April 2008 – Board of Supervisors – Emergency Management Decision Process. Provides access to the public/private partners to participate and provide input. OES receives many calls wanting to get involved. Creates a single Regional Disaster Council; not a duplication of Services. An elected rep from each city will sit along with city CEO. Ordinances will change to allow 1 council in county, All planning will still occur within city. Hope is that there will be consent item on calendar. Maximum use of resources in planning, preparedness, response and recovery to emergencies. Utilizes technical and political resources. Provides regional standards for EP efforts. Collaboration, Coordination, communication. Cost Effective. Based on FIRESCOPE, SEMS and the ICS, and is NIMS compliant.

Operational council surrounded by 9 cities, and many other organization. Bring everyone together.



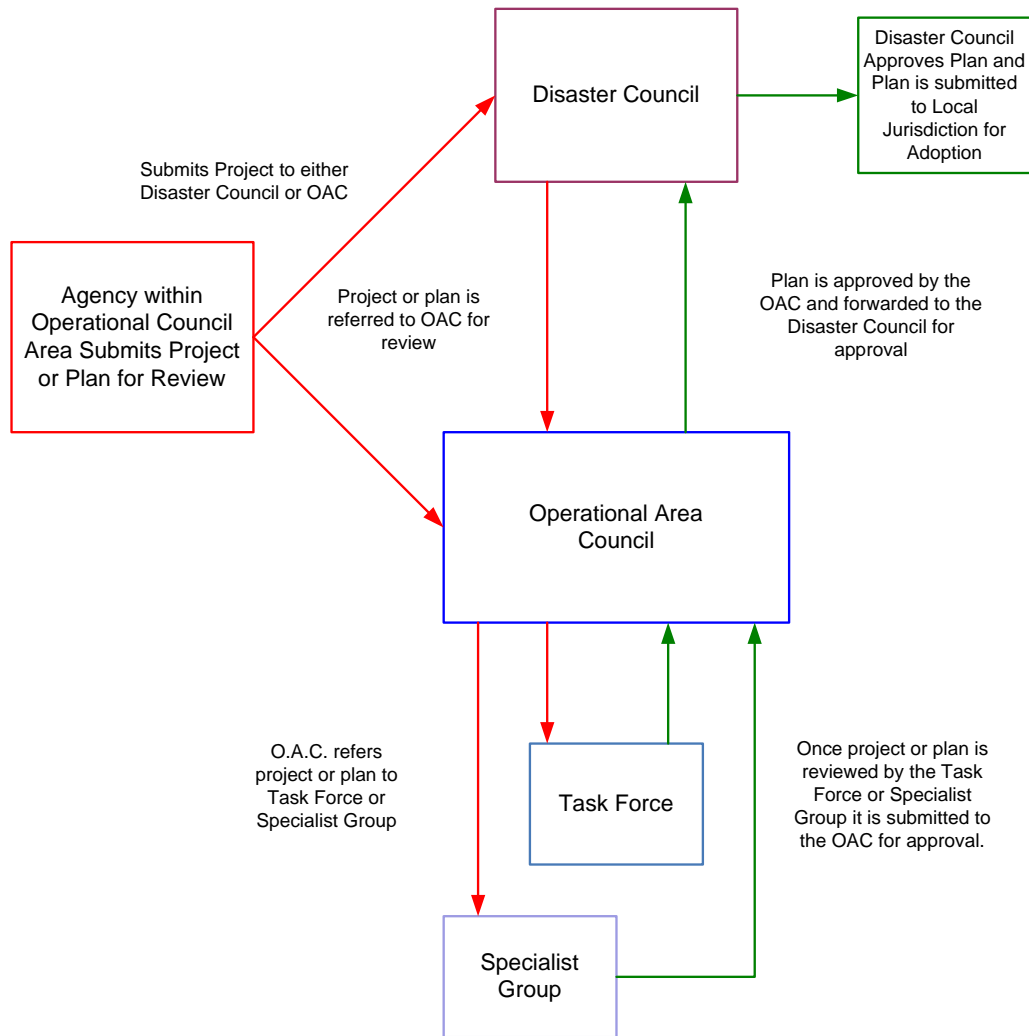
Ad Hoc taskforce – works on issues or topics; or Specialists  
 Technical Review committee  
 Operational Area Council  
 Disaster Council  
 Then back to city councils for adoption

Flowchart



Decision Process for EM is a good business model. Maintain NIMS compliance for funding. Critical that we are compliant

## DECISION PROCESS FLOW CHART



12/12/07

### Next Steps

Concurrence –

Sample resolution and ordinances to all that want them

Presentations – will do what ever is needed to sell idea

Participating Agencies Meeting – May 8, 2008

Operational Area Review – all cities are on board so far

OES will provide that staff and support, mechanism so that everyone is on the same page. We don't want Katrina.

**Questions:**

Dan – how many technical review committees? Only activated if there is a need. Could be several. Subject Matter Experts appropriate-not-appropriate.

Terry- sounds like this is a planning process. Master aggregate, component that will work. What kind of authority will council have in giving direction or mandates to this group. Authority to county departments. All others are voluntary. Issue they may have, operational area is Stan County – Mutual Aid – outside OES, may have issues. County may have authority to say Yes/No. About plans and merging plans. Disaster Policy; i.e. Fuel in Pandemic flu.

This council – plans and funding – will the authority extend to this council to approve funding? No. Not the intent. Only interested in Homeland Security Money – make sure that all requirements are met. OES neck on chopping block,

Richard – Only asking for coordinating the effort in resources. We are not a state asset federal asset. OES can no to sending fire to outside the area. Have the veto.

Renee – ongoing patient tracking process. More policy involvement. Would that need to go through Disaster council. Some of policy would go through hospitals some through EMS. Once this group approves, will go to up to Operational Area Council. Have hospitals been invited to the meeting? Everyone is invited, don't want to recreate this council. Government, non-government are involved.

Tammy – suggest take this to the HealthCare executive round table. Scott, Renee agree. Call Dr Walker.

4. System Saturation – Teri Norton

Handout given. Stats look better. 41 hours in April, not highest this year. Better compared to previous 3 years. Following pages are break downs for each patients.

**Committee Reports**

5. Patient Tracking – Randy Fike

MMC and DMC both provided information from drill. Results not too bad. Call time received and arrival have some variance which explains why numbers do not meet. Sharon looks at time of dispatch. Still close numbers wise. Some calls might be inter-facility. DVD's from DMS on triage tag training. Given to Ed Bartly – County Fire for training. Hoppe to have participation on that level. Sub-

group needs to review policy. MVEMSA policy review – Renee looked and it's not in there at all. Complete new policy – Fire, EMS – Multiple policy???

Renee – could MVEMSA look at policy? Richard need to have Doug find the policy. Fire – OES or Fire District,

Darin Kram - Contact with San Joaquin County to see what they have in place.

As base station hospitals the EMS has some authority, Fire is another matter. Required by HICS to have patient tracking in place for Hospitals. Invite San Joaquin to next meeting.

What level do we take this – right now this is at the volunteer level

Terry – any others barriers? Takes Hospital, EMS and Fire participation trained at same level to make this work. Ongoing to catch all aspects/people, are we prepared.

Alicia – frustration – there is no policy that states must do throughout county. So far voluntary. Needs to move up to a Policy level decision. All EMS, Fire, Hospitals have policy level decision.

SJ has policy through base station for EMS, Fire; we should have the same. Be accountable.

**MOTION- Committee evaluates policy, develops draft policy, formalize process. (Alicia/ Randy)**

6. HRSA Grants – Renee Cartier

- HRSA – 06/07 waiting for reallocation approval
- Surge Training- Sharon Perry

State meeting last month. Standards and Guidelines presented. 4 volumes available now; foundational Knowledge, Hospital, ACS, Payers. 3 volumes late 08; clinics, LTC and HC professionals. Price Waterhouse Survey, 06-07 budget. Definition: “ Project identifies obstacles hindering healthcare delivery...

Foundational Knowledge 0 defines surge, transitioning patient care.

Definition of Surge – Pg 11 Foundational Knowledge- very vague

Declared/Proclaimed???? by Local Health Officer; ,moves up food chain??? Questions were not answered. Standard or Guideline – unknown. No straight answers were given. Declared – only governor can; proclaimed –

others. This is not an emergency – does not move into local emergency-  
what's the point???

This has not been signed off by State OES-

- HPP: 07-08 approval.
- ACS- Ad Hoc – Last month drill, set up trainers. 2 – 20ft trailers, 25 beds. Beds were set up very tightly. Each trailer has a book explaining layout – very good. Vericor was hands on. Policy developing by Jeff. Set up functionally. Storage in process.
- Homeland Security Funds –
- Full scale drill at Johanson High Aug 7

7. EMSystem

Waiting to meet.

8. Public Health Officer Report - Dr Walker

9. CA Dept Public Health – No current representative

10. CHA: Lonnie Howard next month?

11. Roundtable

AB 38 – Combines OES and Homeland Security – looks like it will pass. Meeting with employee groups. Fear that Emergency Services Act will go away. Governor hasn't responded to questions. Questionable impact....

Stan County Medical Health Directory – Not for general distribution. Please update contacts. Add sat phone,

Pat – EMS authority Dr Steven Tharratt - new.

CA Disaster Medical Ops manual up for public review. CDPH not involved. Courses for Medical Health Medical Managers. Pat on committee. CA Medical Volunteers,

training for local administrators. No exercise by CDPH for 2008, Spring 2009. Mission Support Team (MST) – assist in deployment of state resources. RDMHC’s manual, MHOAC manual to come. Few counties that do not have RDMHS officers identified.

Aug 7<sup>th</sup> – full scale exercise – Johannson High School.

12. Meeting Adjourned:

**13. Next Meeting: June 2, 2008 – 1pm at Memorial Education Center – McHenry**