

TITLE: HAZARDOUS MATERIALS RESPONSE

APPROVED: _____

Executive Director

Medical Director

EFFECTIVE DATE: 05/01/03

SUPERSEDES: _____

REVISED: 03/11/03

REVIEW DATE: 03/11/08

PAGE 1 OF 3



HAZARDOUS MATERIALS RESPONSE

I. AUTHORITY

Division 2.5, California Health and Safety Code, sections 1797.220 and 1798; Title 22, California Code of Regulations, Division 9, Chapter 4, section 100144

II. DEFINITIONS

A. "Hazardous Materials Group" means the personnel, under the direction of the Hazardous Materials Group Supervisor or Incident Commander, trained to the level of Hazardous Materials Technician/Specialist, with equipment and resources necessary to mitigate a hazardous materials event. The Hazardous Materials Group organizational structure and responsibilities are further outlined in the California FIRESCOPE Field Operations Guide, ICS 420-1.

III. PURPOSE

To provide direction to EMS personnel when responding to incidents that have potential for exposing responders to hazardous materials.

IV. POLICY

A. The Hazardous Material Incident procedure shall be utilized anytime there is the potential for contamination to responders, patients, or bystanders by a hazardous material. The responsibility for hazardous material containment, identification, and decontamination, and victim evacuation rests with fire and/or law enforcement agencies. The management structure utilizing Incident Command System shall be followed, according to the Multi-Casualty Incident (MCI) Field Operations Protocol. EMS personnel shall report to the Incident Commander or designee immediately upon arrival.

B. Pre-Arrival Consideration

Generally, hazardous materials come in three basic forms: solids, liquids and gases. The hazards associated with these forms are due to one or a combination of the following factors:

1. Flammability

2. Toxicity
3. Radioactivity
4. Reactivity

General safety considerations based on these factors include the fact that EMS personnel may become involved in a hazardous materials situation while managing a medical emergency. Examples of such potential exposures include, but are not limited to; vehicle collisions, industrial incidents, and residential areas - (e.g., meth labs, household chemical storage, pesticides, etc.).

- C. EMS Personnel must be able to recognize potential exposures and take steps to minimize their risks from such exposure, and to take appropriate steps once a hazard is identified. Specific safety considerations for each type of hazardous materials are listed in the Emergency Response Guidebook for Hazardous Material Incidents (DOT P. 5800.3).

V. PROCEDURE

A. Dispatch

Units dispatched to a possible hazardous materials incident will be advised by dispatch (in addition to the usual information) of the following:

1. EMS personnel may be responding only to provide support for the Hazardous Materials Group.
2. Confirmation of activation of the hazardous materials plan.
3. Type of transporting vehicle - train, big-rig, etc.
4. Type of hazardous material(s) involved (if known) (Specific safety considerations for each type of hazardous materials are listed in the North American Emergency Response Guidebook for Hazardous Material incidents (DOT P. 5800.3)).
5. On scene wind direction and recommended approach route - coordinate with Incident Commander.
6. Estimated number of patients.
7. Provide location of Incident Commander Post and agency that the Incident Commander is from.
8. EMS Staging Area location.
9. Other responding agencies.

B. Arrival At Known Haz-Mat Scene:

At no time shall EMS personnel enter the scene of a known hazardous materials incident without the clearance from the Incident Commander or designee. Once the support zone (see Appendix B) is established, the responding EMS unit(s) will stage as directed by Incident Commander or designee. Once at scene, in coordination with the Incident Commander or designee, EMS will provide treatment and transport of patient(s) after decontaminated.

C. Recognition of a Hazardous Material (On-Scene (EMS) or During Transport):

EMS personnel may become aware of a hazardous material while on scene or during transport. If such a situation occurs, EMS personnel will take the following measures:

1. Evacuate to a safe location (minimize exposure);
2. Notify EMS Dispatch and advise them of the potential contamination;
3. EMS personnel will then request fire department response to the scene for site control and emergency decontamination. EMS personnel will follow the direction of the fire department once they arrive.
4. The scene will be managed as a hazardous materials site using principles of the Incident Command System (ICS). Specific directions can be found in Appendix "A" of this Policy.
5. Activate County Hazmat Incident Plan.
6. *Notify the Disaster Control Facility to ensure early notification of area hospitals of the hazardous materials event.*
7. Personnel shall not leave the area, eat or drink and should consider self-decontamination;

III. INCIDENT COMMAND

In accordance with California Health & Safety (H&S) Code, Section §1798.6(c)), the Incident Commander for a hazardous materials incident is defined as the “appropriate public safety agency having primary investigative authority.” In the case of multi-jurisdictional incidents, a unified command may be established (H&S §1798.6(b)).

- A. All levels of government accept the basic responsibility for the immediate protection of people, property, and the environment from an accidental (uncontrolled) discharge and/or spill of hazardous substances. In fulfilling this obligation, specific roles and tasks are herein assigned. It is anticipated that those jurisdictions requesting assistance through the activation of this plan will be aware of and abide by these concepts.
- B. Scene management responsibility is dictated by statute and jurisdiction and is a prime consideration in dealing effectively with a hazardous material incident.
 1. Incidents on unincorporated public roadways, highways and all freeways – California Highway Patrol is vested with scene management.
 2. Incidents in unincorporated areas (excluding unincorporated public roadways, highways and all freeways) and in incorporated areas (including streets) – local law enforcement or fire department is vested with scene management.

IV. EMS FIELD MANAGEMENT

All hazardous materials incidents with five (5) or more patients, shall be managed in accordance with EMS Policy #620 – “Multi-Casualty Incident (MCI) Management - Prehospital Operations.” Routine EMS operations may however, be established off-site,

in an area designated as a “cold” (support) zone - clear from any hazardous materials exposure, and whose patients have been decontaminated prior to entry into a treatment area. EMS Personnel may at times, provide only a support role and function to the Hazardous Materials Group in some situations. This may include monitoring of haz-mat personnel, acting in the capacity of Medical Group Supervisor, etc.

A. FUNCTION

In a hazardous materials incident with multiple patients (MCI), the Medical Group Supervisor may be responsible for overall medical scene control in coordination with the Incident Commander and/or designee. The Medical Group Supervisor shall follow Standardized Emergency Management System (SEMS) Guidelines:

1. The Medical Group Supervisor will appoint personnel depending upon the needs of the incident.
2. Personnel can be placed in charge of several areas simultaneously if this is the best utilization of available resources. Responsibilities for these positions are described in the Multi-Casualty Incident (MCI) Field Operations Policy #820.

B. PATIENT CARE

1. EMS personnel shall not attempt to enter any haz-mat scene or render medical aid beyond the support zone without the specific direction from the Incident Commander or designee. Medical treatment and transportation is secondary to the protection of spreading the contaminate, and the management of the haz-mat incident. Management of the hazardous material and the prevention of further exposure take precedence over patient care. EMS personnel may be requested to receive non-ambulatory patients from the Contamination Reduction Zone after decontamination has been completed.
2. The Hazardous Materials Group may initiate patient care within the inner perimeter of the exposure area(s). EMS personnel may only provide and/or initiate patient care after the patient has been transferred to them in the designated area (support zone) after decontamination considerations have been addressed.
3. Deceased victims shall be left undisturbed at the scene.
4. The use of EMS helicopters for the transport of suspected hazardous materials patient's is prohibited.

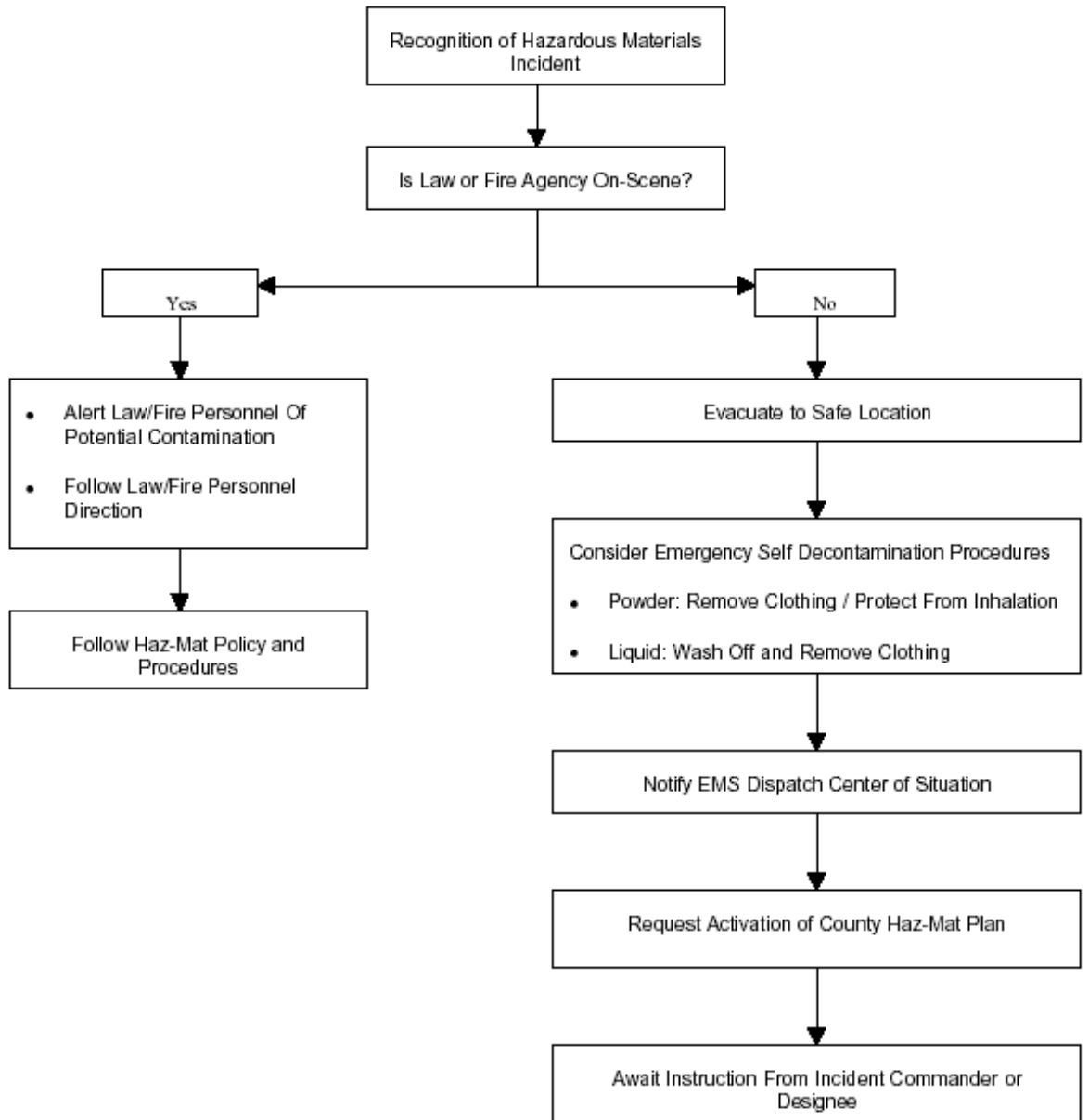
C. CONSIDERATIONS FOR HOSPITAL ARRIVAL

1. If, during patient transport personnel become aware of information that the patient is a victim of hazardous material exposure or contamination, they shall immediately notify EMS Dispatch. The transport unit shall make Base Hospital contact and provide them with all available information. The Base Hospital may direct the transport unit to:

- a. Discontinue transport for emergency decontamination; or
 - b. Continue transport to a hospital.
2. The patient is not to be moved into the hospital until properly decontaminated.
3. After the patient is transferred, the emergency crew must leave all equipment, trash, contaminated clothing, etc., in the ambulance and lock its doors. Personnel shall not leave the area, eat or drink and should consider self-decontamination. The ambulance will remain out of service until it has been monitored for contamination and cleared as non-toxic.

APPENDIX A

EMS Decision Tree for Hazardous Material Incidents



APPENDIX B

Entry Control Points for Hazardous Materials Incidents

