

TITLE: MARK I KIT ADMINISTRATION

APPROVED: SIGNATURE ON FILE IN EMS OFFICE
Executive Director

SIGNATURE ON FILE IN EMS OFFICE
Medical Director

EFFECTIVE DATE: 7/01/2011

SUPERSEDES: _____

REVISED: _____

REVIEW DATE: 7/2016

PAGE 1 OF 3

MARK I KIT ADMINISTRATION FOR EMERGENCY RESPONDERS

I. AUTHORITY

Health & Safety Code, Division 2.5, California Code of Regulations, Title 22, Division 9. California Code of Regulations, Title 19, Division 2, Articles 1-8, Sections 2400et seq., Standardized Emergency Management System (SEMS) Regulations.

II. DEFINITIONS

- A. "Emergency Responder" means a fire fighter, law enforcement officer, or emergency medical services personnel, including first responders, EMT, and Paramedics.
- B. "Mark I Kit" means a Nerve Agent Antidote Kit containing autoinjectors of 2 mg Atropine and 600 mg Pralidoxime Choride (2-PAM).

III. PURPOSE

The purpose of this policy to establish standards for Emergency Responders in the administration of Mark I Kit Auto-injectors in treating Emergency Responders with nerve agent exposures.

IV. POLICY

- A. Mark I Kits shall only be utilized by individuals who are current employees or volunteers of an approved Mark I Provider Agency.
- B. Mark I Kits will be used only by approved Mark I Provider Agency personnel that have been trained in their use and have the Kits available.
- C. Atropine may be administered IM/IV only by Paramedics in situations where MARK I Kits are not available.
- D. **Mark I Kits may only be administered to emergency responders. They are not to be utilized for the general public.**

- E. Nerve agent antidote medications are only given if an emergency responder is showing signs and symptoms of nerve agent poisoning. **THEY ARE NOT TO BE GIVEN PROPHYLACTICALLY.**

This policy is to be used in conjunction with policy # 570.40 (Haz/Mat Incidents).

V. PROCEDURE

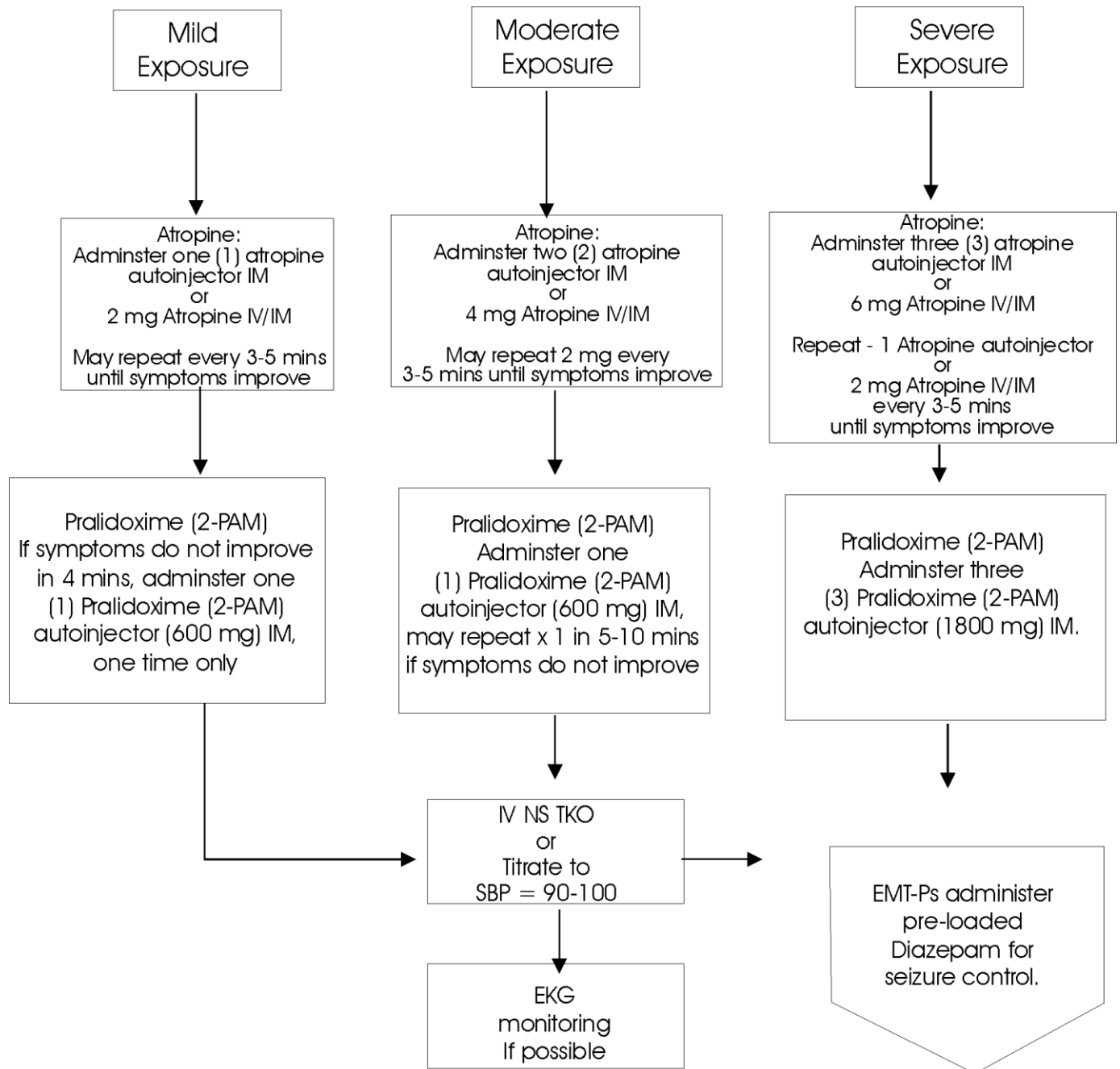
- A. If exposure to nerve agents is suspected, evaluate emergency responders for signs and symptoms to determine severity of exposure using the following chart:

Signs and Symptoms of Nerve Agent Exposure

<u>EXPOSURE</u>	<u>SIGNS & SYMPTOMS</u>
Mild	<ul style="list-style-type: none">• Unexplained runny nose• Tightness in the chest• Difficulty breathing
Moderate	<ul style="list-style-type: none">• Bronchospasm• Pinpoint pupils resulting in blurred vision• Drooling• Excessive sweating• Nausea and/or vomiting• Abdominal cramps
Severe	<ul style="list-style-type: none">• Involuntary urination and/or defecation• Jerking, twitching and staggering• Headache• Drowsiness• Coma• Convulsions• Apnea

**Mnemonic for Nerve Agent
Exposure**
*S*alivation
*L*acrimation
*U*rination
*D*efecation
*G*astrointestinal pain & gas
*E*mesis

B. Administer the Mark I Kits using the following guide.



C. Submit an Unusual Occurrence report within 24 hours to Mountain-Valley EMS Agency.